



Kilia

....NEW GENERATION®

Bowl Cutter 200-330-525 Ltr.

“THE CLASSICAL” SERIES

“THE CLASSICAL” Series of Food Machines fulfil the requirements of most of the customers worldwide. The classical design and the very competitive equipment components are topped by an excellent cost performance ratio.



200 Ltr. Vacuum Bowl Cutter with loader and unloader

■
■
■
■
■
■
■
■
KILIA





200 Ltr. Bowl Cutter with loader and unloader



525 Ltr. Vacuum Bowl Cutter with loader and unloader





Panel with Joy sticks / Unlaoder Disk with sealing

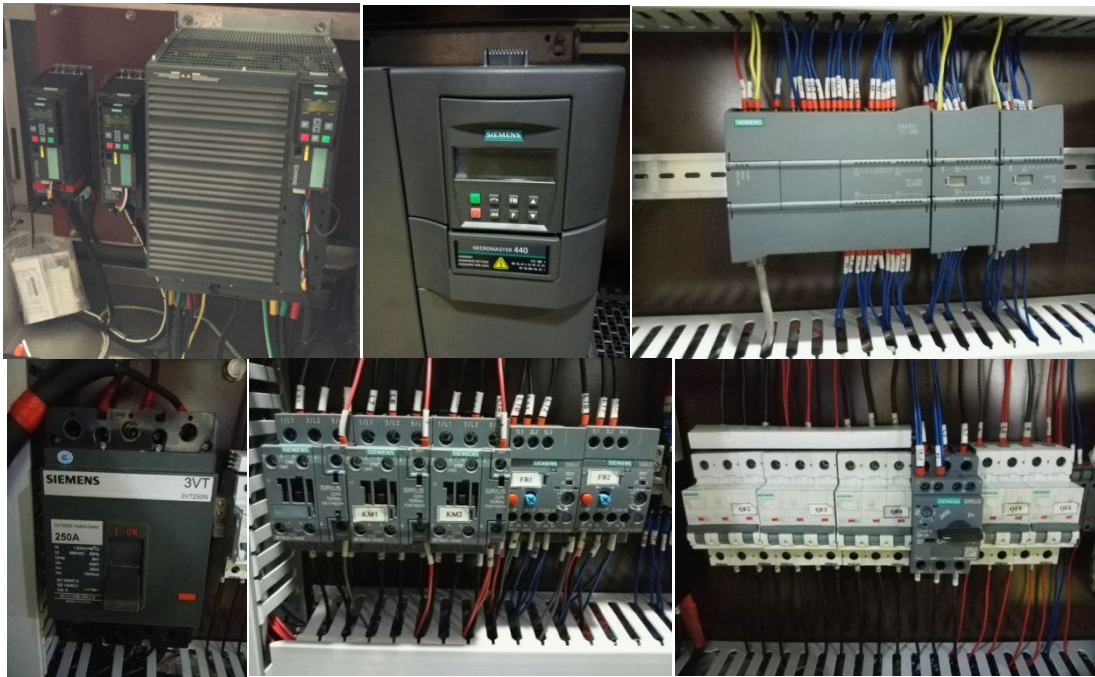


6 Knives with lock nut

All electrical and electronic components are integrated in either a **separate self standing switch cabinet (200/300)** or in the **machine integrated switch cabinet (550)**. The components are mostly from the German Brand Siemens. Heating elements and a fan avoid the appearance of condensation water. It is connected with the machine through a cable of 3 m standard length.



Leading Food Machines

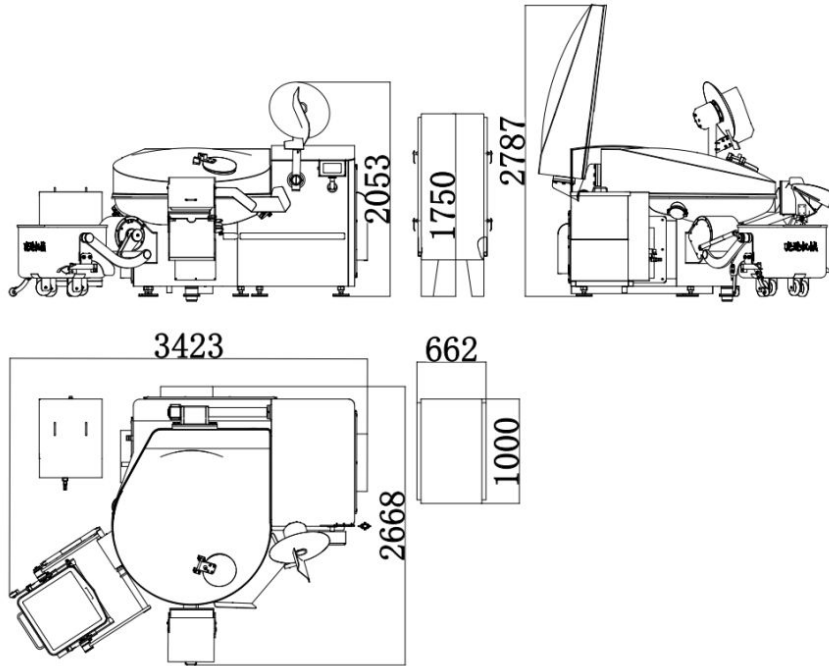


Main Technical Data:

Bowl Cutter "The Classical Series"	200 litres	330 litres	525 litres
Knife shaft speed forward, variable drive, rpm	750/1500/2800/4500 (240)	750/1500/2800/3800 (240)	750/1500/2800/3500 (240)
Bowl Volume	200	330	525
Bowl speed, rpm	4/8/12	4/8/12	4/8/12
Main motor capacity (high speed system) , kW	90	110	200
Bowl motor capacity, kW	4	4	4
Unloader motor capacity, kW	5,5	5,5	5,5
Hydraulic motor capacity, kW	1,5	1,5	1,5
Vacuum Pump Motor capacity, kW	7,5	7,5	7,5
Fuse rating for 400 Volt , Amp. Tr.	315	350	450
Vacuum Pump m ³ /h	160	160	160
Weight, kg	4500	5000	6000



Machine Dimensions appr. in mm



Edition: April 2019

