



Bowl stainless steel with knife head and 3 or 6 knives



Noise reduction Lid with standard spice flap



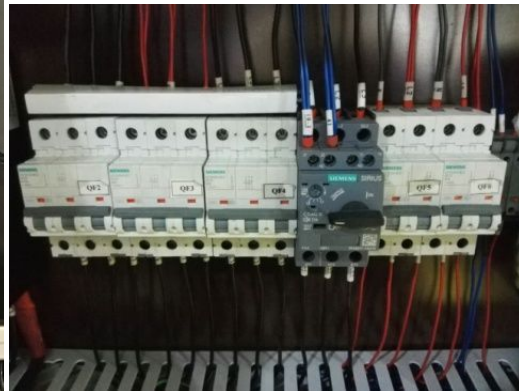
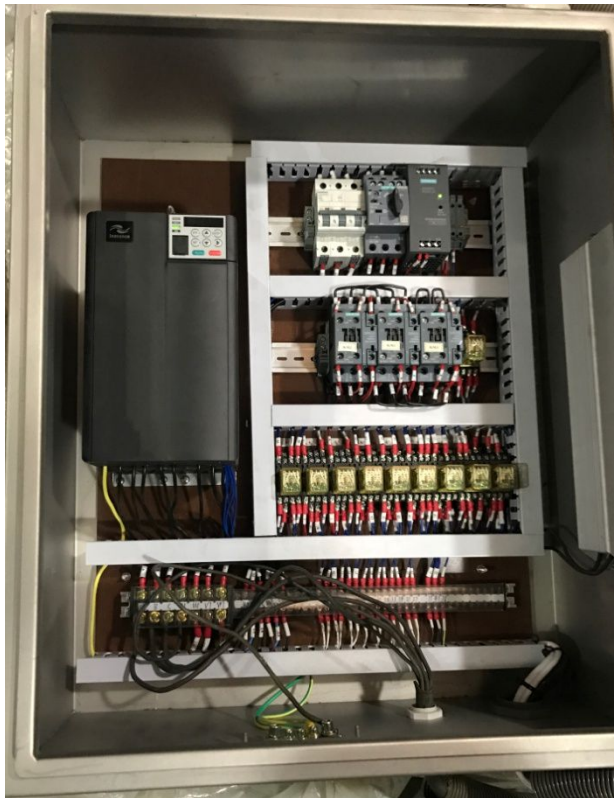
Panel with Joy sticks for a simple operation

KILIA

Leading Food Machines



- All electrical components are located in a **switch cabinet** which is integrated in the machine.



Most of the electrical components are from the German Brand Siemens.



A **Frequency Converter** is a **Standard** for the knife shaft drive!
Unique for machines in this size!

KILIA



Main Technical Data:

Bowl Cutter "The Classical Series"	80 litres
Bowl Volume	80 Ltr. (60 KG)
Knife shaft speed forward rpm	750 / 1500 / 3000 / 4000
Bowl speed rpm	8/12
Unloader speed rpm	85
Total motor capacity kW	17
Dimension in mm	L 1800 / W 1500 / H 1400

Edition: June 2018

