



650 ltr. Vacuum Mixer



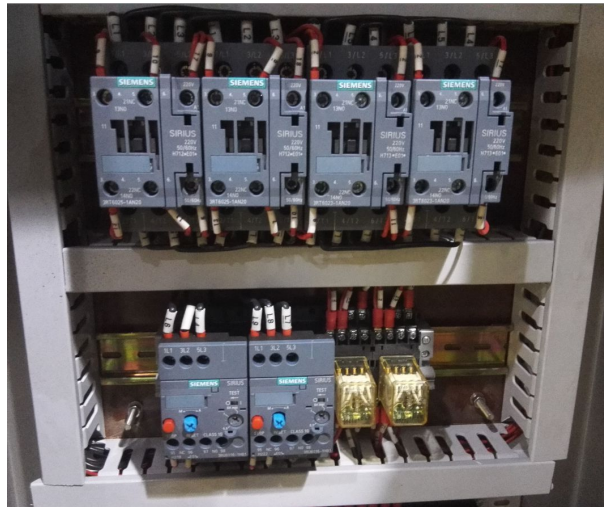
Discharge flaps



Paddle arms

■ ■ ■ ■ ■ ■ ■
KILIA





Relays steering

Standard:

- Machine stainless steel
- Hopper stainless steel
- mixing capacity approx. 440- 490 kg
- 2 spiral PADLLE or SPIRAL mixing arms
- Relays steering with push buttons
- Integrated switch cabinet
- Drive capacity of spiral mixing arms 6 (7,1 with vacuum) kW, 380 V, 50 Hz

Optional:

- Separate hoist loading unit for 200 ltr. Trolley
- Vacuum installation with pneumatic lid

Lift for 200 lt. Trolleys





The mixer can be equipped with a standalone loader for a standard size of 200 ltr charging trolleys (not included. Lifting force: 200 Kg, Lifting height 1,90 m, Lifting speed: 3 m / min, Dimensions in mm 920 x 1100 x 2800.

Technical Data:

Fine Mix “The Classical Series	650 litres
Hopper volume [ltr]	650
Max. batch size [kg]	440-490
Power [Vacuum]	6 (7,1) kW
Weight (Vacuum) [kg]	820 (1070)
Dimensions LxWxH [mm]	1600 x 1100 x 1400

Edition: June 2019

