



Kilia

....NEW GENERATION® Vacuum Filler KVF 2000/3600/6000

“THE CLASSICAL SERIES”

“THE CLASSICAL” Series of Food Machines fulfil the requirements of most of the customers worldwide. The classical design and the very competitive equipment components are topped by an excellent cost performance ratio.



Vacuum Filler KVF 3600

■  
■  
■  
■  
■  
■  
■  
■  
KILIA





Vacuum Filler KVF 6000



Vacuum Filler KVF 2000

**Different sizes**

The filling range is between: 5g-9999g and with a straight filling quantity of: 6000 / 4500 or 3500 kg/h.





### **Machine stainless steel full casing**

Robust machine construction with a long durability surface and which is easy to clean.

### **High Performance**

With its precise servo motors and filling system as well as a speed of 0-500 times per minute the weight tolerance has a very low level of  $\pm 2g$  and for palletized products of  $\pm 5g$ .



The machine is equipped with a powerful BUSCH Vacuum Pump and Single Filling Pipe ( Standard ) :  $\Phi 22mm$ ,  $\Phi 28 mm$ ,  $\Phi 35mm$

### **Hopper**

The hopper takes easily up to 220 ltr.

### **Lift for 200 lt. Trolleys**

The Filler (except KVF 2000 optional) has an integrated hydraulic loader for a standard size of 200 ltr charging trolleys (trolley not included).





## Automatic processing

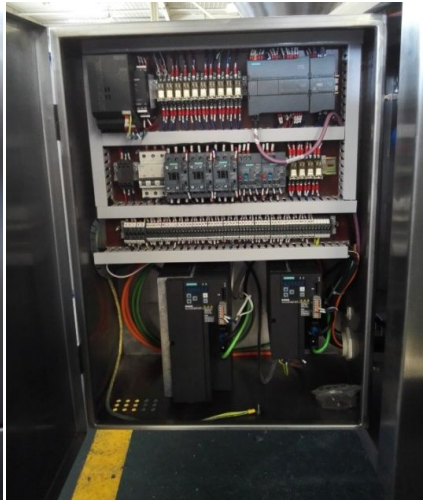
With its pneumatic system any kind of pneumatic clipping machine or automatic production line can be fixed for an automatic processing.



## Most modern control / panel

The most modern Siemens Panel / PLC generation guarantees an easy operation as well as the highest quality standard.

The electrical switch box with all components from the SIEMENS (like HMI Touch Panel, Servo Driving Motors, PLC, etc.) is integrated in the machine.





## Option:

An optional available variable twister can be easily fixed as well. The Twister has Selectable pipes in  $\Phi 10$ 、 $\Phi 12$ 、 $\Phi 15$ 、 $\Phi 19$ mm (special customized available twisting pipe of  $\Phi 8$ mm)



## *Technical Data:*

Filler KVF “The Best Series”	2000	3600	6000
Straight Filling capacity	2000 kg/h	3600 kg/h	6200 kg/h
Variable Filling Portioning speed	0-550 times / minute	0-550 times / minute	0-550 times / minute
Variable Twisting speed	0-550 times / minute	0-550 times / minute	0-550 times / minute
Working Air Pressure	0,5-0,6 Mpa.	0,5-0,6 Mpa.	0,5-0,6 Mpa.
Power in kw	11,5	11,5	11,5
Voltage / HZ	380 / 50	380 / 50	380 / 50
Dimensions without loader in mm (length/ width/ height)	800x850x1620	1130x1150x1850 1960x1450x1850 (with loader)	1130x1150x1850 1960x1450x1850 (with loader)

Edition: April 2019

