

Kilia

....NEW GENERATION™

Bowl Cutter 40 Ltr. “THE CLASSICAL” SERIES

“THE CLASSICAL” Series of Food Machines fulfil the requirements of most of the customers worldwide. The classical design and the very competitive equipment components are topped by an excellent cost performance ratio.



■ ■ ■ ■ ■ ■ ■ ■
Kilia

Bowl Cutter 40 ltr. “The Classical” Series



Bowl stainless steel with knife head and 3 knives



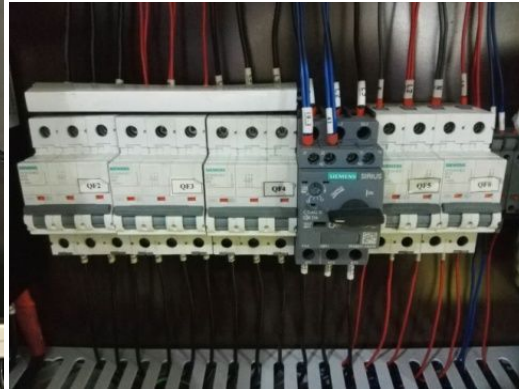
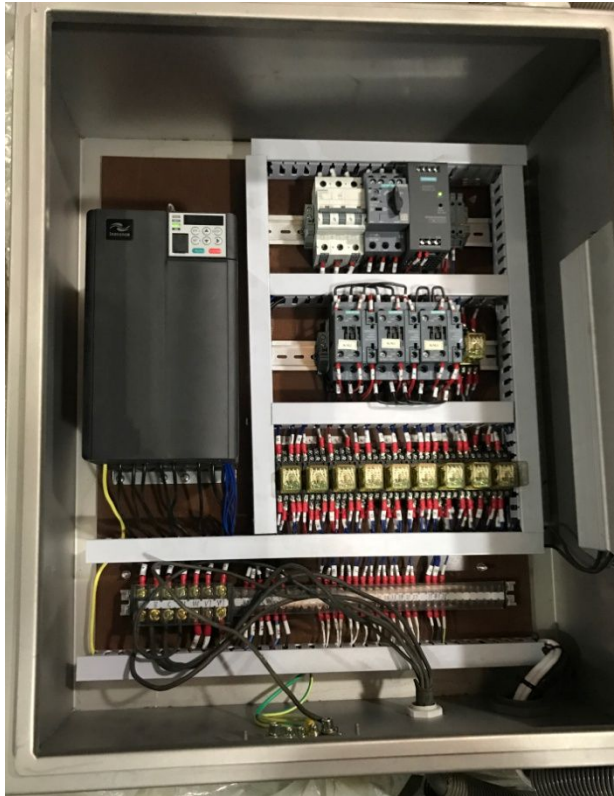
Noise reduction Lid with standard spice flap



Panel with Joy sticks for a simple operation

Leading Food Machines

- All electrical components are located in a **switch cabinet** which is integrated in the machine.



Most of the electrical components are from the German Brand Siemens.



A **Frequency Converter** is a **Standard** for the knife shaft drive!
Unique for machines in this size!

Main Technical Data:

Bowl Cutter “The Classical Series”	40 litres
Knife shaft speed forward rpm	750 / 1500 / 3000 / 4000
Bowl Volume	40 Ltr. (25 KG)
Bowl speed rpm	10/16
Total motor capacity kW	8,5
Dimension in mm	L 1100 / W 850 / H 1050

Edition: February 2018