



Kilia

...NEW GENERATION® Fine Mix 700 Itr.

“THE CLASSICAL SERIES“

“THE CLASSICAL” Series of Food Machines fulfil the requirements of most of the customers worldwide. The classical design and the very competitive equipment components are topped by an excellent cost performance ratio.



700 Itr. Mixer

■
■
■
■
■
■
■
■
KILIA

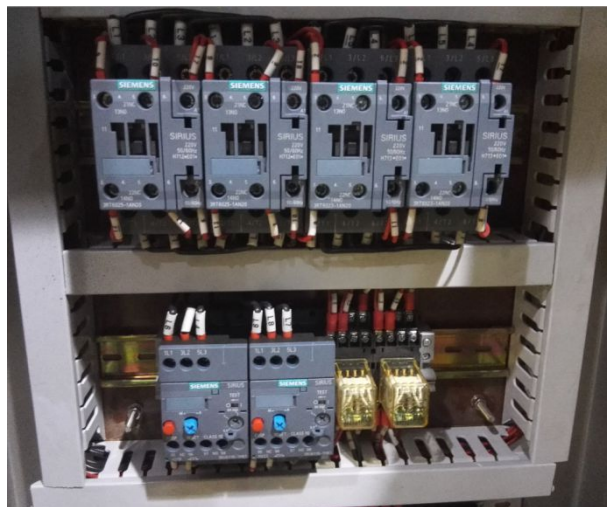




Discharge flaps



Paddle arms



Relays steering





Standard:

- Machine stainless steel
- Hopper stainless steel
- mixing capacity approx. 480- 525 kg
- 2 spiral PADLLE or SPIRAL mixing arms
- Relays steering with push buttons
- Integrated switch cabinet
- Drive capacity of spiral mixing arms 6 (7,1 with vacuum) kW, 380 V, 50 Hz
-

Optional:

- Separate hoist loading unit for 200 ltr. Trolley

Lift for 200 lt. Trolleys



The mixer can be equipped with a standalone loader for a standard size of 200 ltr charging trolleys (not included. Lifting force: 200 Kg, Lifting height 1,90 m, Lifting speed: 3 m / min, Dimensions in mm 920 x 1100 x 2800.





Technical Data:

Fine Mix “The Classical Series	700 litres
Hopper volume [ltr]	700
Max. batch size [kg]	480-525
Power	6 kW
Weight	750
Dimensions LxWxH [mm]	1330 x 1190 x 1670

Edition: July 2019

